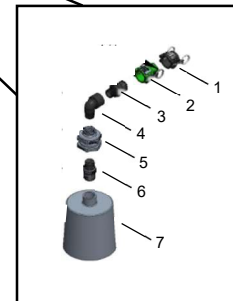
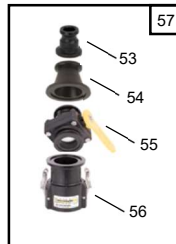
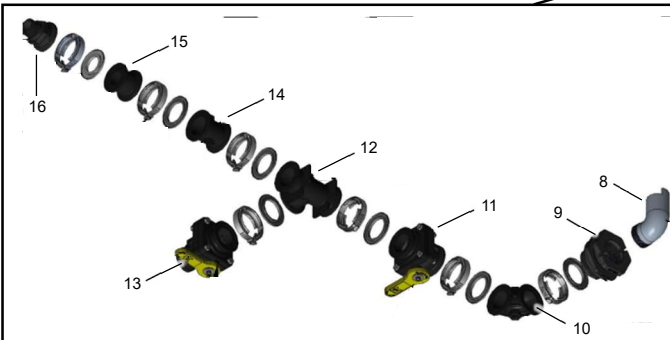
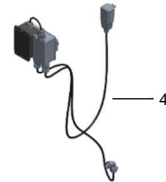
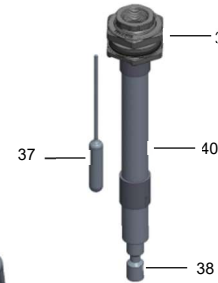
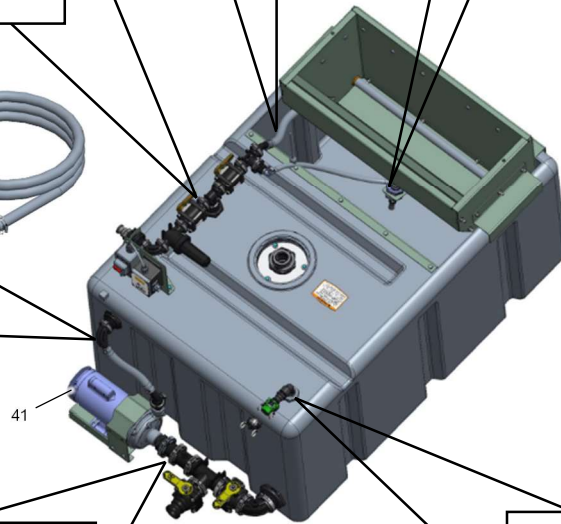
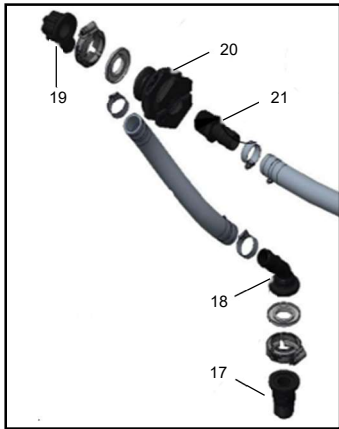
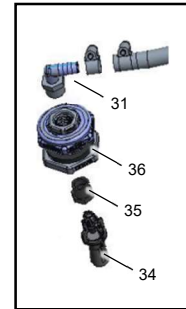
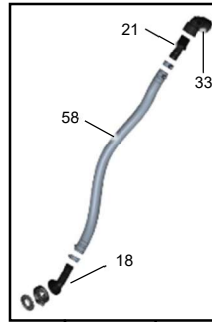
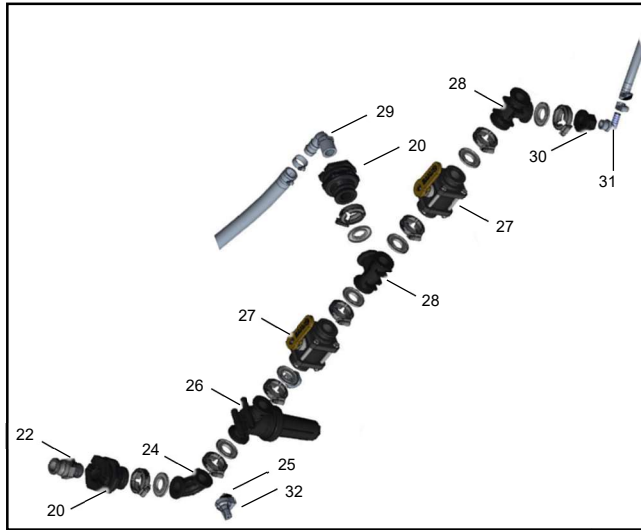




SNOWFLOW

GENESIS SERIES PARTS POSTER BRINE BUDDY 2021 - 2022



1	CAP [3/4" QDC]	143-7172
2	FITTING- STRAIGHT [3/4" GDN HOSE X 3/4" QDC]	143-7182
3	FITTING- STRAIGHT[3/4" MNPT X 3/4" MQDC]	143-7629
4	ELBOW- 90 DEG [3/4" MNPT X 1/2 FNPT, PP]	132-7706
5	FITTING- BULKHEAD [3/4" FNPT X 3/4" FNPT, PP, EPDM]	143-7454
6	NIPPLE- RDCR [3/4" MNPT X 1" MNPT, PP]	143-7032
7	VALVE- FLOAT 1"	143-7067
8	FITTING- ELBOW [90, 2 MNPT SIPHON TUBE, PP]	143-7076
9	FITTING- BULKHEAD [2.0 FP MFLD X 2.0 FNPT]	143-7028
10	FITTING- ELB 90 [2.0 FP FLG, SWEEP, PP]	143-7200
11	VALVE- BALL [2 FLNG X 2 FLNG]	143-7202
12	FITTING- TEE [2 FP, 2 FP, 2 FP, MNFLD, PP]	143-7201
13	VALVE- BALL [2 QD X 2 FLNG]	143-7203
14	FITTING- STR [2.0 FLG X 2.0 FP, PP]	143-7196
15	FITTING- STR, RDCR [2.0 FP MFLD X 2.0 MFLD]	143-7022
16	FITTING- STRAIGHT [1 1/2 MNPT X 2 MFLD, PP]	143-7019
17	FITTING- STRGHT [1 MNPT X 1 MFD FLG, PP]	143-7189
18	FITTING- ELBOW 45 [1 HB X 1 MFLD, PP]	143-7017
19	FITTING- ELB 90 [1 HB X 1 MFD FLG, PP]	131-0241
20	FITTING- BULKHEAD [1 MFD X 1 FNPT, PP]	143-7027
21	FITTING- STRAIGHT [1 BARB X 1 MNPT, PP]	143-7184
22	FITTING- STRAIGHT [1 MNPT X 1 MQDC]	143-7176
24	FITTING- ELB 90 [1 X 1 MFD FLG SWP, PP,DRILL]	143-7712
25	REGULATOR- AIR, 20 PSI SET PRESSURE	143-7094
26	STRAINER- 30 MESH [1" FLANGE]	143-7026
27	VALVE- MANUAL, M100	130-7348
28	FITTING- TEE [1 X 1 X 1 MFD FLG, PP]	127-9834
29	ELBOW-90 [1 HB X 1 MNPT, PP]	108-3576
30	FITTING- STRGHT [1/2 FNPT X 1 MFD FLG, PP]	143-7186
31	FITTING- ELBOW 90 [1/2 HB X 1/2 MNPT, PP]	120-8673
32	VALVE- BALL [90, 1/4" MNPT X 1/4" MNPT]	143-7099
33	FITTING- ELBOW [90, 1 FNPT X 1 FNPT]	143-7180
34	NOZZLE- EDUCTOR, 1/4- PP	143-7170
35	FITTING- REDUCER [1/2 - 1/4]	135-5743
36	FITTING- BULKHEAD [1/2 FNPT X 1/2 FNPT, PP]	MSC20104
37	HYDROMETER, 4-26.4% NaCl	143-7146
38	SENSOR- TOROIDAL	143-7012
39	FITTING- BULKHEAD [1.5 FNPT X 1.5 FNPT, PP]	143-7207
40	ASM, PIPE, TOROIDAL SENSOR	143-7456
41	PUMP- ELECTRIC 110V AC, 63 GPM	143-7008
42	MODULE, CONTROL, BRINE MAKER	143-7445
43	GASKET- FLANGE [FG100, EPDM]	143-7402
44	1" FLANGE CLAMP- SCREW, WORM	AU114153
45	GASKET- FLANGE [FG200, EPDM]	143-7403
46	2" FLANGE CLAMP- SCREW, WORM	104-9089
47	GASKET- FLANGE [FG220, EPDM]	143-7181
48	2" FULL PORT FLANGE CLAMP- SCREW, WORM	127-5005
49	1/2" HOSE CLAMP	2412-119
50	1" HOSE CLAMP	2412-34
51	ASM, HOSE, 1", FEMALE CAM LEVER	143-7685
52	CAP- PIPE [1 FNPT, PP]	143-7034
53	FITTING- STR [1 MQD X 1 MFD FLG, PP]	143-7188
54	ADAPTER- MFLD FLG [1 X 2FP, PP]	130-7314
55	VALVE- BALL [2 FLNG X 2 FLNG]	143-7202
56	FITTING- STRAIGHT [2 FP QD X 2 MFLD, PP]	143-7718
57	ASM, ADAPTER, 2 FP QD, VALVE, 1 QD	143-7719
58	HOSE [1 EPDM MULTI-USE 200 PSI BLACK]	7411020